

# *Kingsley* **ART CLUB**

FEBRUARY 2017 NEWS

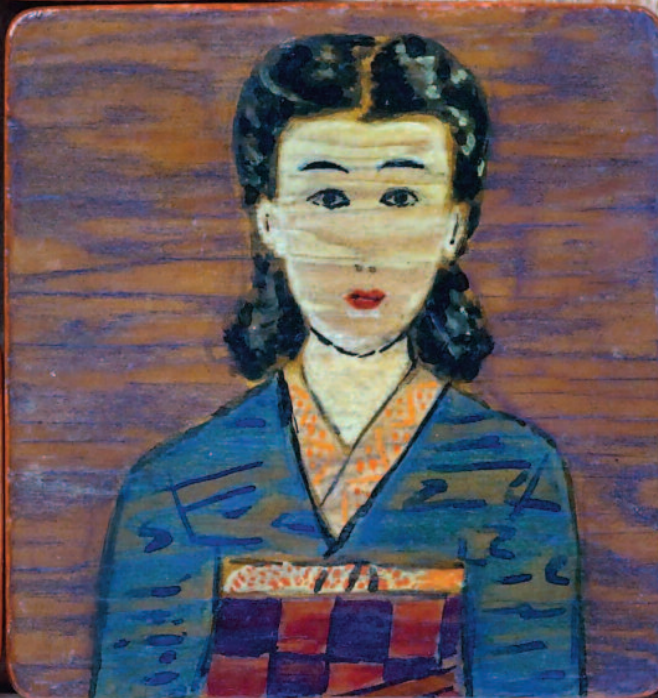


LECTURE SERIES  
**DELPHINE  
HIRASUNA**

February 15



FINDING  
SOLACE  
FROM ART  
AFTER  
EXECUTIVE  
ORDER 9066



# Kingsley ART CLUB

## 2016-17 KINGSLEY BOARD MEMBERS

**President:** Nancy Lawrence

**Vice President:** Sally Flory-O'Neil

**Secretary:** MJ Hamilton

**Treasurer:** Barbara Ruona

Debbie Corr

Kat Crow

Marge Dobrowolski

Libby Figeroid

Sam Reep

Pam Saltenberger

Mary Anne Schendzelos

Barbara Thomas

AJ Watson

### Committees:

Jill Pease

Linda Tochterman

Susan Willoughby

For committee assignments,  
please visit our website at  
[www.kingsleyartclub.org](http://www.kingsleyartclub.org)

**Newsletter Editor:** Sam Reep

Send comments to  
[kingsleyartclub@hotmail.com](mailto:kingsleyartclub@hotmail.com)  
or call 916-961-4654.

 [kingsleyartclub](https://www.facebook.com/kingsleyartclub)

*COVER IMAGE: A puzzle made of wood, paint and shellac by Kametaro Matsumoto, while interned at Minidoka, Idaho.*

*Photo: Terry Heffernan/Collection of Alice Ando and Jean Matsumoto*



## From the President

On Saturday, January 21st, Crocker-Kingsley 2017 at Blue Line opened with a very successful reception. Those who came enjoyed a chance to look at and talk about the work. The juror determines the work in the show and the awarding of the prizes from Best of Show to Honorable Mention. This show reflects **Squeak Carnwath's** interest in abstraction in her own practice. It is well worth visiting.

With the Crocker-Kingsley Committee, **Tony Natsoulas** from Blue Line did much work from organizing the invitations to the show to hanging the work beautifully and getting engraved plaques for the winners.

**Scott Shields** announced the five pieces that will be shown at the Crocker next month – and these pieces are different from the five prize winners. We can't thank Tony enough nor the intrepid Crocker-Kingsley Committee with **MJ Hamilton** and **Marge Dobrowolski** in the lead. Go see the work if you did not get there for the opening.



**William Ishmael's** talk on January 18th was very popular and many people signed up for his tours of Art Street. That project shows commitment to the arts as a vital part of community. The Kingsley has recognized that we need art and artists to help us see the world around us in all its diverse glory. We need all of the arts more than ever to affirm and grow in challenging times.

**Club news:** On the following page, you'll see information for a trip to San Francisco and then the Manetti Shrem. Our Trip Committee, **Libby Figeroid, Dabbie Corr,** and **Barbara Thomas,** has responded to experience and traffic to get the bus home at an earlier time.

The Community College Merit Awards are going to be different this year. The lunch at the Casa has been popular but declining in participation. Instead, this year the Club will be hosting the students and our members at the Crocker Museum on a Thursday in April from 4 to 6 with tours of the museum for the students, awards and recognition, and food and drinks. Community College students may not have visited the Museum and we think that is an essential part of their learning.

The High School Student Show here at the Crocker continues. We hope that you might encourage any high school artist to enter. Students need to work through their teacher and choose an inspiration piece from the Crocker collection. There's a lot to choose from.

See you at the lecture on February 15th!

— Nancy Lawrence

## KINGSLEY ART CLUB FIELD TRIP: Thursday, March 23, 2017

### Legion of Honor & Manetti Shrem Museum

"Monet: the Early Years," on exhibit at the **Legion of Honor**, shows the development of the young painter and his technique in using texture and light. The 60 works we will see were painted between 1858 and 1872, from the time Monet was 18 until he was 32. These works, gathered from museums around the world, are landscapes, portraits, and still lifes, some considered quite daring for the time, and they show Monet's influence on the coming Impressionist School of which he would eventually be part.



Claude Monet,  
*"La Grenouillère,"* 1869.  
Oil on canvas,  
29 3/8 x 39 1/4 in.,  
The Metropolitan Museum  
of Art, New York

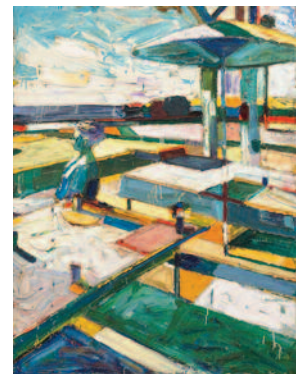
We will have lunch at the **Presidio Café** at the Presidio Golf Course, before departing San Francisco for Davis to visit the new **Manetti Shrem Museum of Art**. The current exhibit, "Out Our Way," contains 240 works which explore the revolutionary UC Davis Department of Art circa 1958. Robert Nelson, who hired the 12 artists represented here, such as Wayne Thiebaud, Robert Arneson, Roland Petersen, Roy De Forest and others, called it one of the "courageous and wildly inventive art communities working in the world."

**Cost of trip:** \$80.00 Kingsley members; \$85.00 guests (lunch included).

#### Pick-up Points:

- 7:15 a.m.: 1830 Arden Way, behind the old Coco's restaurant;
- 7:30 a.m.: South side of Target parking lot, Riverside and Broadway.

For further information call **Libby Figeroid** 916-961-7997.



Roland Petersen's "Picnic,"  
an oil on canvas from  
1965, is part of the "Out  
Our Way" exhibit at the  
Manetti Shrem Museum.

#### Kingsley March 23 Field Trip

Kingsley Member \_\_\_\_\_

Phone \_\_\_\_\_

I will be at 1830 Arden way at 7:15 a.m.

I will be at Target parking lot at 7:30 a.m.

Make checks out to **Kingsley Art Club** and send to Libby Figeroid,  
4740 Wilmer St, Carmichael, CA, 95608 before March 16.



## DELPHINE HIRASUNA

FINDING SOLACE FROM ART AFTER EXECUTIVE ORDER 9066

Wednesday, February 15, 2017, 1:15 p.m.

Crocker Art Museum, Setzer Auditorium

February's Kingsley speaker Delphine Hirasuna will make a unique connection and provide further context for the Crocker Art Museum's exhibition, opening on February 19: "Two Views: Photographs by Ansel Adams and Leonard Frank." This exhibition presents two views of Japanese internment in the early 1940s as a result of Executive Order 9066. Delphine Hirasuna is the author of "The Art of Gaman: Arts and Crafts of the Japanese American Internment Camps, 1942 - 1946" and its sequel "All That Remains." She was also the curator and organizer of a traveling exhibition of the same name which was shown in 10 U.S. museums, including the Smithsonian American Art Museum Renwick Gallery, and which toured five Japanese museums as well.

Her research into the art of "gaman" began about a month or two after her mother had died. Hirasuna was looking around her parent's garage and found a dusty wooden box tucked in a nook in the back of the garage. When she opened the box, she found that it contained some old trinkets: a bird pin and a shell brooch, both of which had been made in an internment camp, and some souvenirs her father had purchased when he was serving in the all-

Japanese 442nd Regimental Combat Team of the U.S. Army. Hirasuna found the objects intriguing and began to wear the bird pin.

One of her colleagues admired the pin and suggested Hirasuna might like to find out more about the subject and write a book.

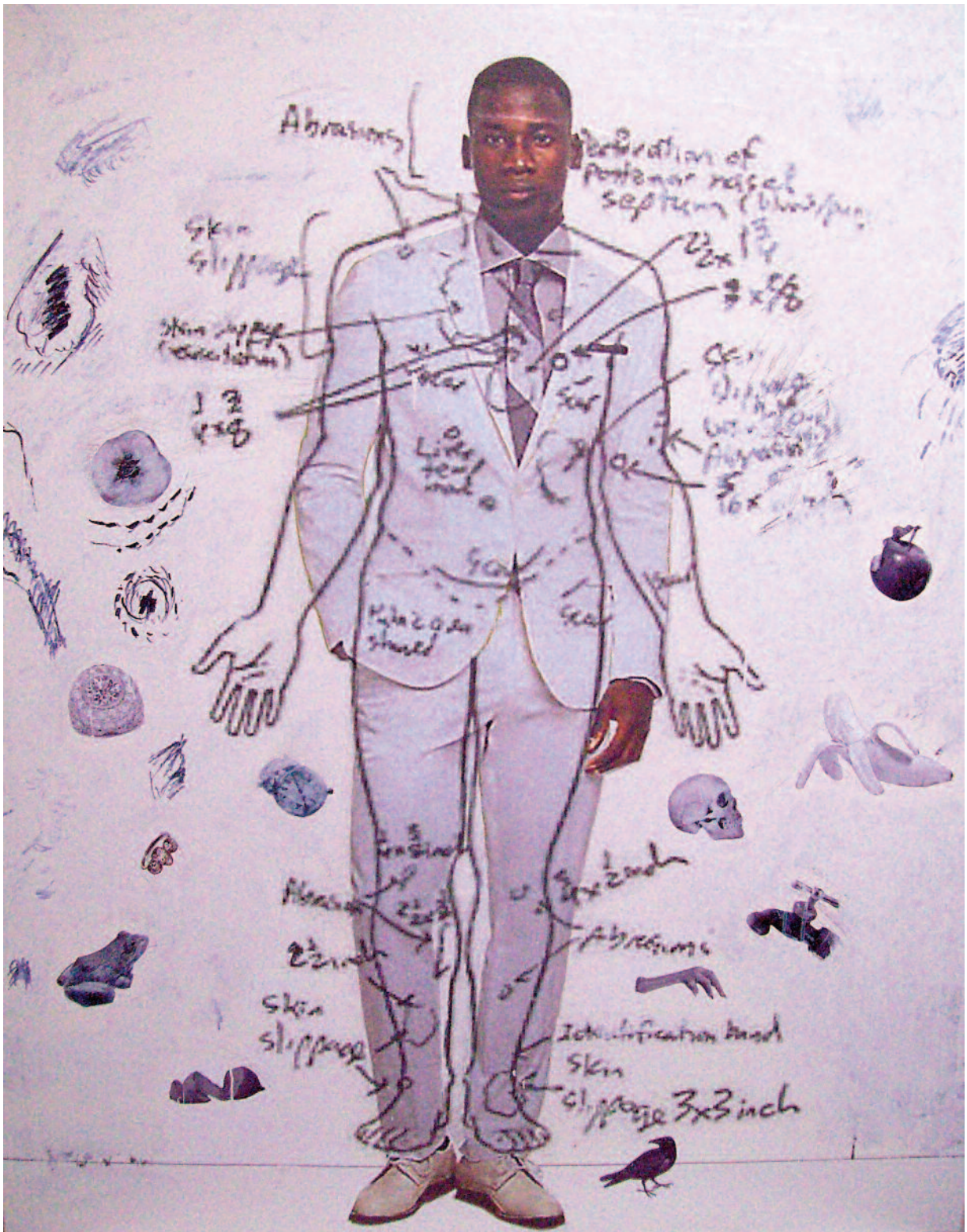
### Hirasuna discusses the role of art, fashioned from found materials at the camps, during the Japanese Internments.



Bird pins made of scrap wood, paint and metal, by Himeko Fukuhara and Kazuko Matsumoto.  
Photo: Terry Heffernan.

As a child born after the internment and growing up, Hirasuna had only learned about the camps in passing comments, as her parents were typical of second generation Americans, born in the U.S. (called Nisei), who did not talk about the camps with their children. Hirasuna's parents had been married less than three years, were living in Fresno and had a young son, when Roosevelt signed Executive Order 9066, which gave the army permission to exclude anyone from the West Coast in the name of military necessity. All ethnic Japanese were given only one week to settle their affairs and report to camp taking only what they could carry. Hirasuna's parents and brother were sent to the internment camp in Jerome, Arkansas, where Hirasuna's older sister was born. Her father was drafted into the U.S. Army from Jerome and was in Italy when the camps were closed. Her mother returned to California by train with her siblings, aged 5 and 2 at the time.

Join us on February 15th as Delphine Hirasuna discusses the role of art in boosting the human spirit during the Japanese Internment and the resulting crafts, fashioned from found materials and scrap at the camps.



**CROCKER-KINGSLEY 2017 ON VIEW**

Winners of the Crocker-Kingsley Competition are now on view at Blue Line Arts in Roseville until February 25. Above, Best in Show winner, "Vanitas Man," by Allan Gordon, 60 x 48 in., mixed media.

c/o Mary Anne Schendzelos  
P.O. Box 313  
Fair Oaks, CA 95628  
kingsleyartclub@hotmail.com  
www.kingsleyartclub.org

The Kingsley Art Club  
Newsletter is printed  
and assembled by  
the staff and students  
of the McClaskey  
Adult School.

## Out and About with the Kingsley in February 2017



### **Kingsley Lecture: Delphine Hirasuna**

Wednesday, February 15

1:15 to 2:30 pm

Doors open at 1:00 pm

Crocker Art Museum,  
Setzer Auditorium

More information at  
[www.crockerartmuseum.org](http://www.crockerartmuseum.org)

**Blue Line Arts:** Crocker-Kingsley Competition 2017 on view until February 25. More information at [www.bluelinearts.org](http://www.bluelinearts.org)

**b. sakata garo:** More information at [www.bsakatagaro.com](http://www.bsakatagaro.com)

**ARC Kaneko Gallery:** More information at [www.arc.losrios.edu/Kaneko\\_Gallery.htm](http://www.arc.losrios.edu/Kaneko_Gallery.htm)